

Figure 8.1 A histogram displaying the frequency of each temperature reading in the list [18.9, 19.1, 18.9, 19.0, 19.3, 19.2, 19.3].

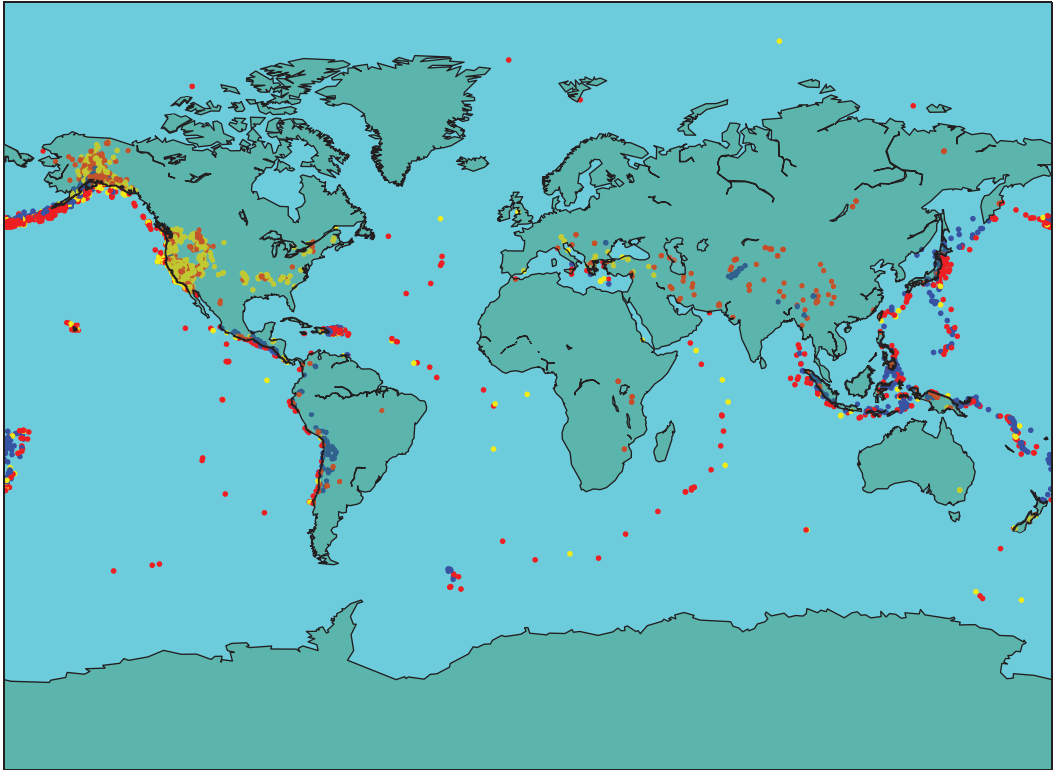
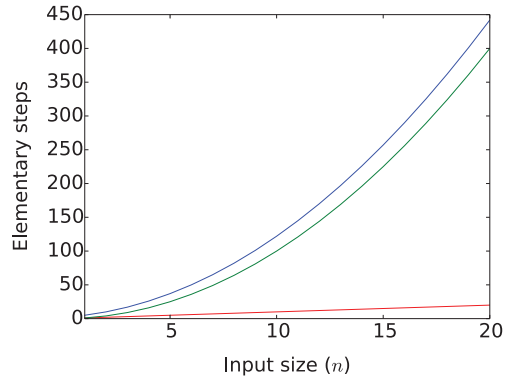
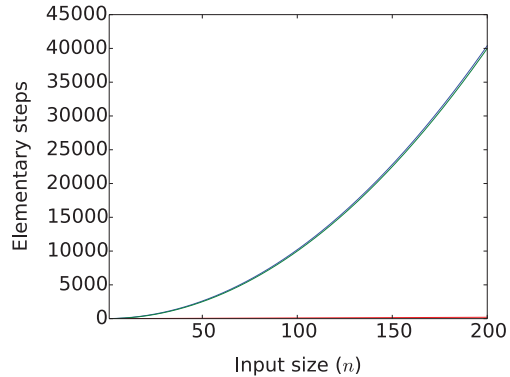


Figure 8.2 Plotted earthquake locations with colors representing depths (yellow dots are shallower, red dots are medium, and blue dots are deeper).



(a)



(b)

Figure 8.3 Two views of the time complexities  $n^2 + 2n + 2$  (blue),  $n^2$  (green), and  $n$  (red). (This is the same as Figure 6.4.)

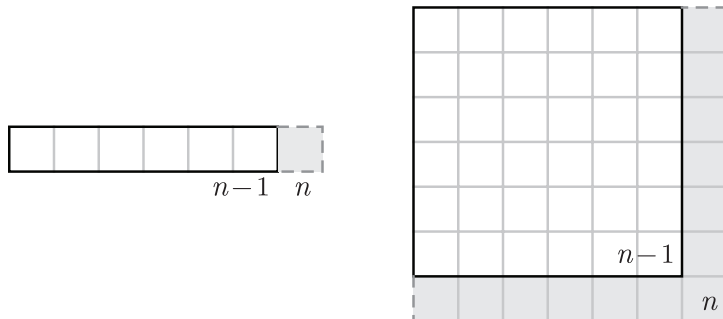


Figure 8.4 Linear vs. quadratic growth.

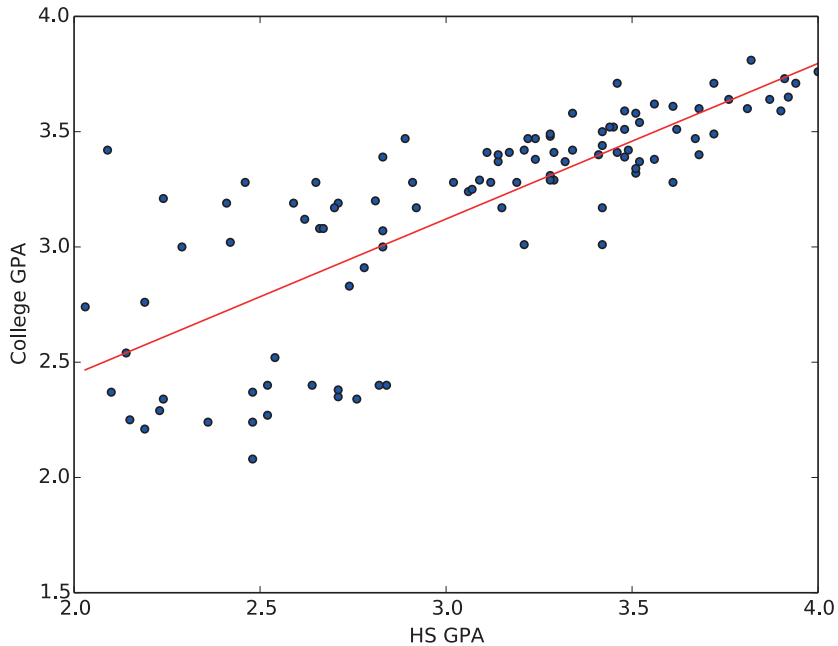


Figure 8.5 Scatter plot showing high school GPA and corresponding cumulative college GPA with regression line.

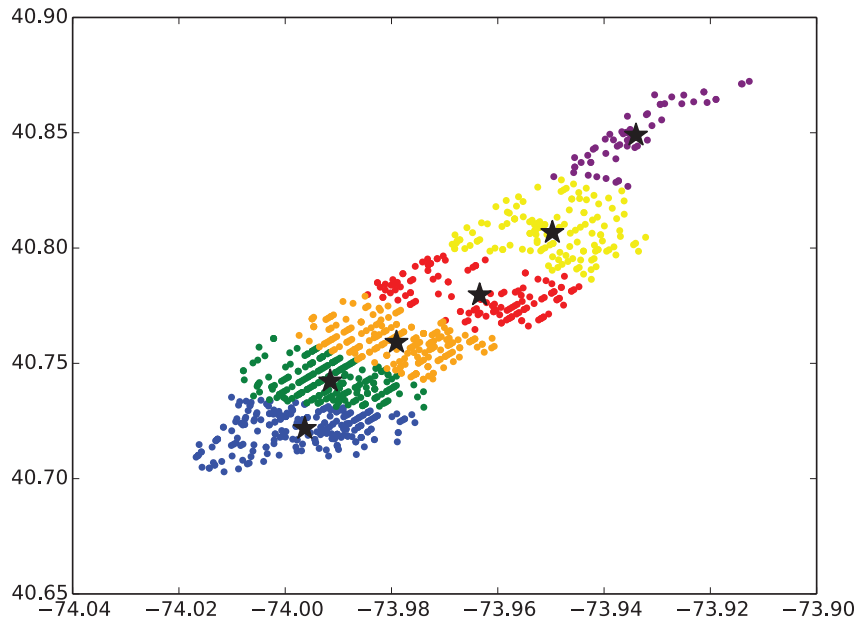


Figure 8.6 Six clusters of bicycle accidents in Manhattan with the centroid for each shown as a star.

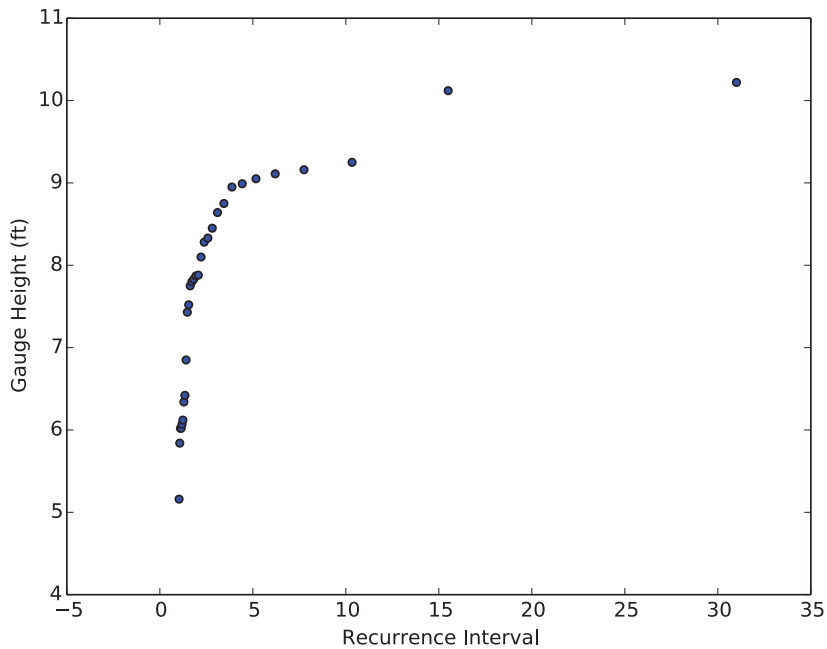


Figure 8.7 The peak gauge height for each recurrence interval.

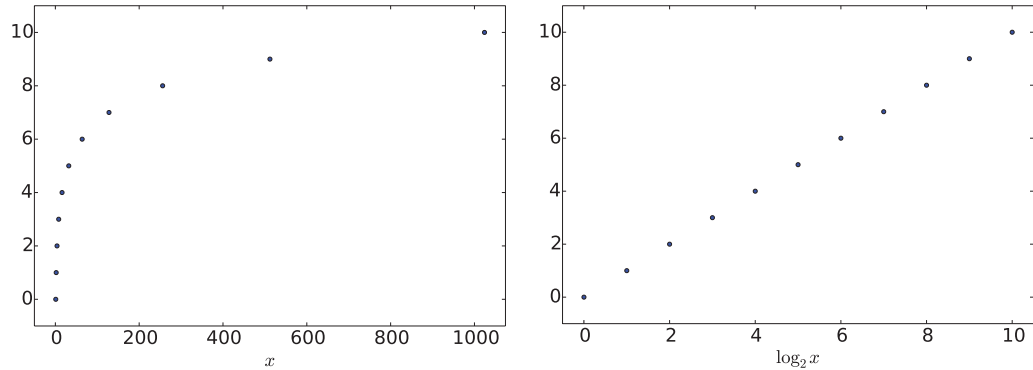


Figure 8.8 On the left is a plot of the points  $(2^0, 0)$ ,  $(2^1, 1)$ ,  $(2^2, 2)$ ,  $\dots$ ,  $(2^{10}, 10)$ , and on the right is a plot of the points that result from taking the logarithm base 2 of the x coordinate of each of these points.



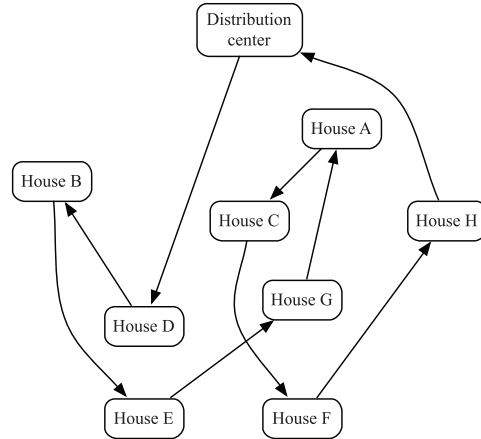


Figure 8.9 An inefficient tour.

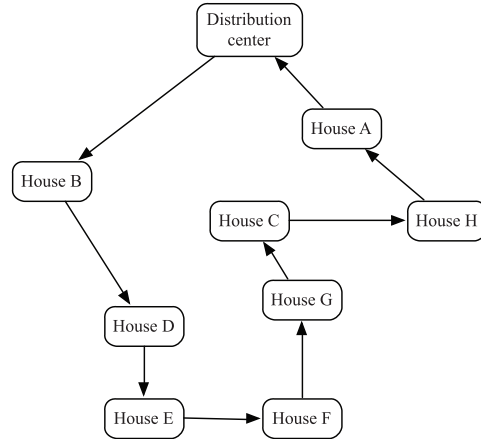


Figure 8.10 A more efficient tour.