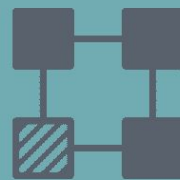


# IRIS

Bridging the Communication Gap

StorkeAI



# OUR TEAM



Krishna Nanda  
**Team Lead**



Renee Labutay  
**Scribe**



Regina Weinreb



Alex Rasla



Raymond Deng

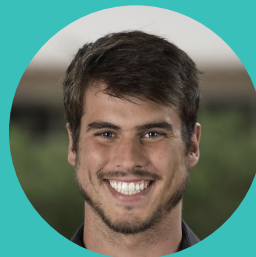
# MENTORS



Lauren Hedberg




Caitlin Davis



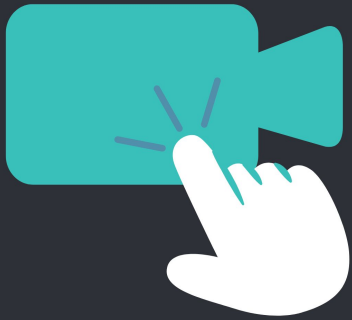
Luan Vieira



Rachel Pham



***By 2025, 36.2 million  
Americans will be working  
remotely.***



*Video conferencing services have seen a **10x** increase in usage.*

- Autistic People Are Struggling

*sensory  
overload*

*Autistic  
burnout*



*detecting  
emotions,  
tone &  
sarcasm*

“

***85% of college educated  
Autistic adults are  
unemployed***

A glowing lightbulb is centered within a large, hand-drawn chalk thought bubble on a black background. The text is written in a bold, italicized white font across the middle of the image.

***There is an untapped  
potential that almost no  
one is paying attention to***

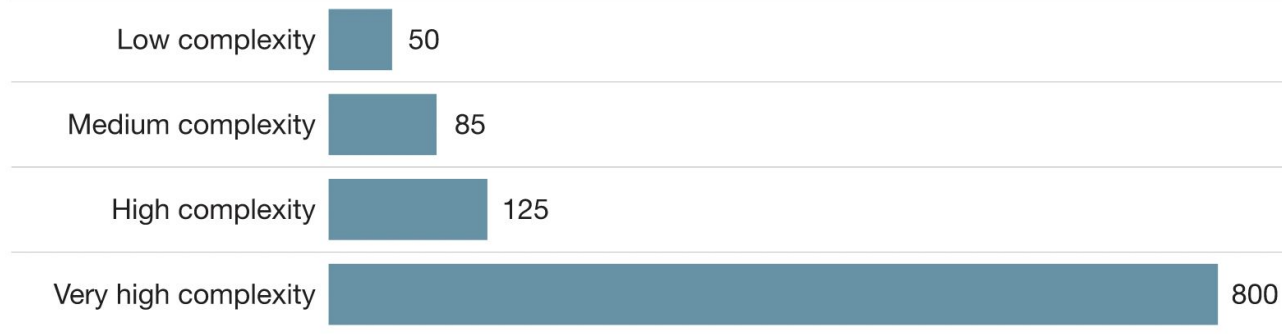
# Talent Matters



Exhibit 1

The relationship between quality of talent and business performance is dramatic.

Productivity gap between average performers and high performers, by job complexity, %



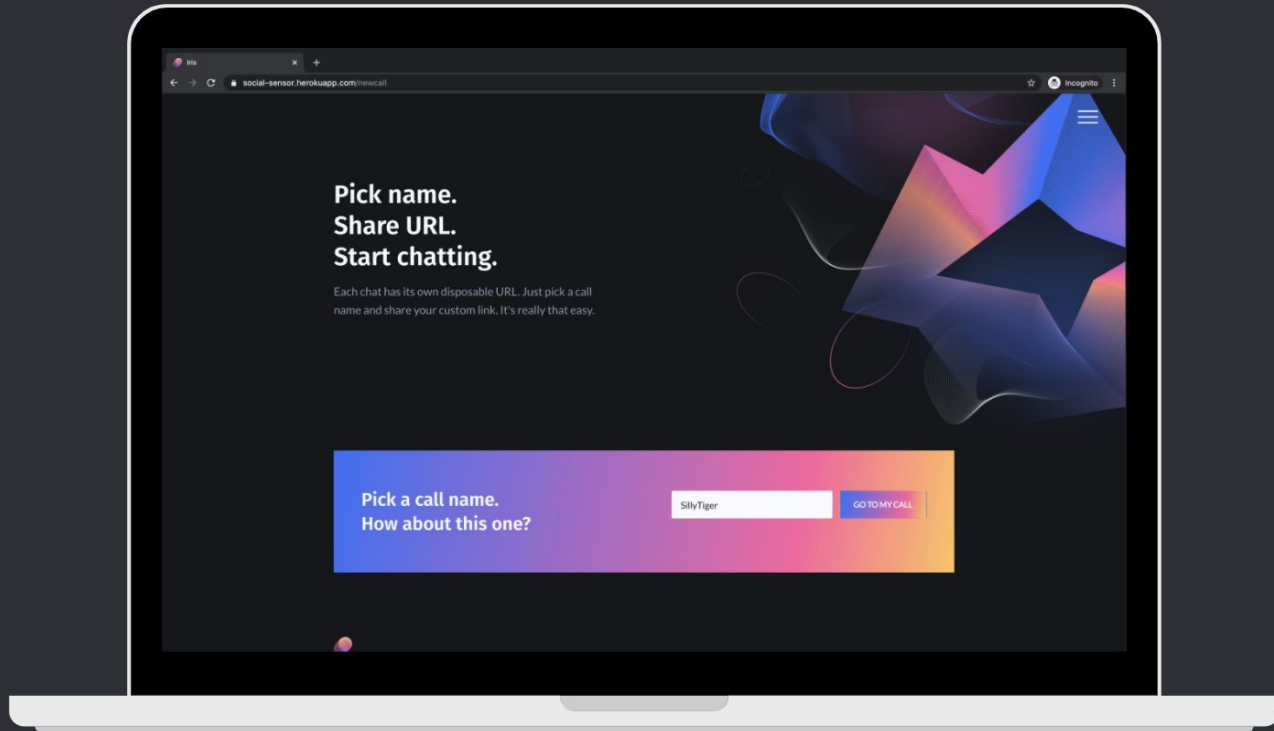




# IRIS

Inclusive Video Calling for the  
Workplace

# IRIS — a lightweight video call platform



## IRIS FEATURES

### Stressors

### Solutions

Social Interactions



Sentiment Analysis

Sensory Overload



Customizable UI

Excessive Anxiety



Research Based Features

- Meet Krishna



**Has trouble navigating  
social interactions**

**Has a meeting with his  
manager, Alex**

## ○ TECHNOLOGIES WE USED



WebRTC



- TECHNICAL CHALLENGES

1. Scaling Iris to 10k users,  $\ll 1s$  inference
2. Autonomous self-tuning
3. Future work: openFER

- TECHNICAL DETAILS: P2P Overview

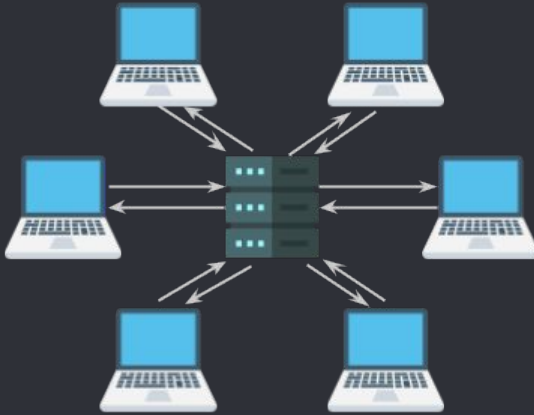


**Server-Based  
video  
calling**

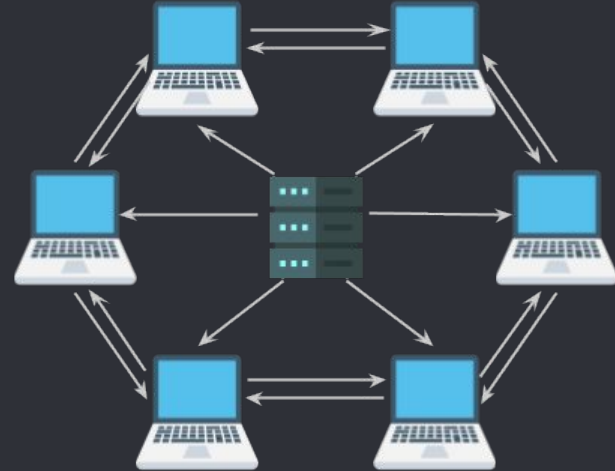


**Peer-to-Peer  
video  
calling**

- TECHNICAL DETAILS: P2P at Scale



**Server-Based  
video  
calling**



**Peer-to-Peer  
video  
calling**

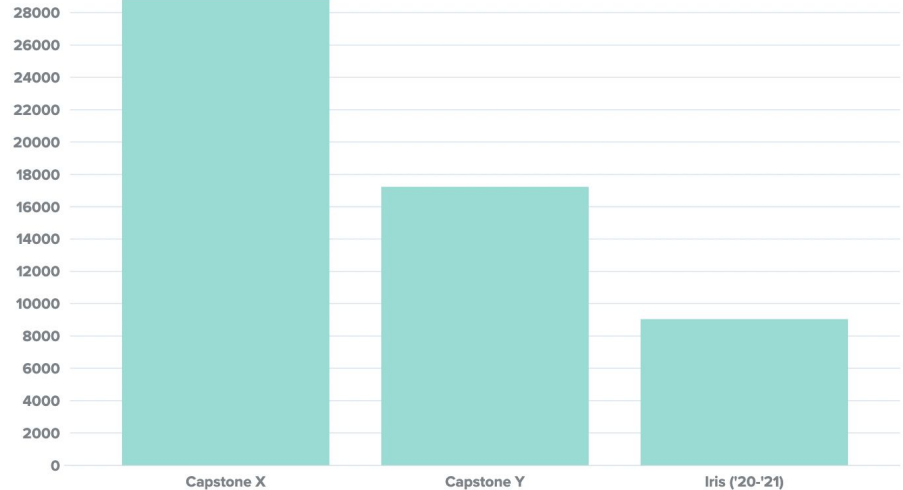


# TECHNICAL DETAILS: Code Simplicity

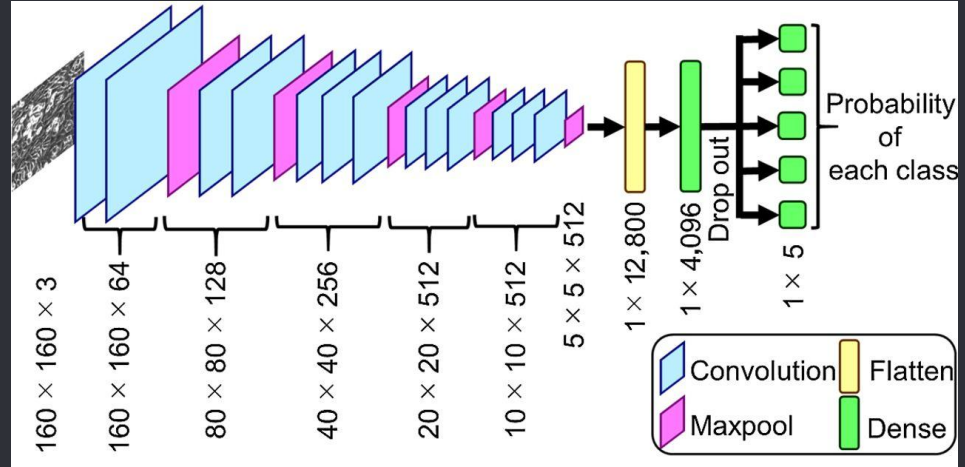
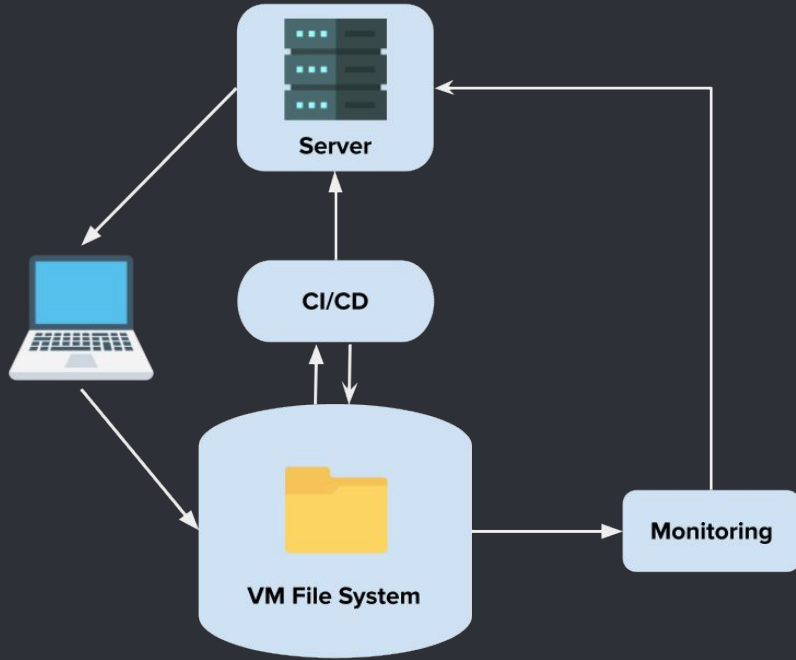
code to integrate a model:

```
onAddStream: async function (event) {  
  
  setInterval(async () => {  
    const video = document.getElementById('remote-video')  
    const detection = await faceapi.detectSingleFace(video)  
    const predicted_expression = Object.keys(detection['expressions'])  
    document.getElementById('predicted-output').innerHTML += predicted_expression  
  
  }, 300)  
},
```

## Lines of Code







# TECHNICAL DETAILS: Self-Tuning System



# Future Work: openFER

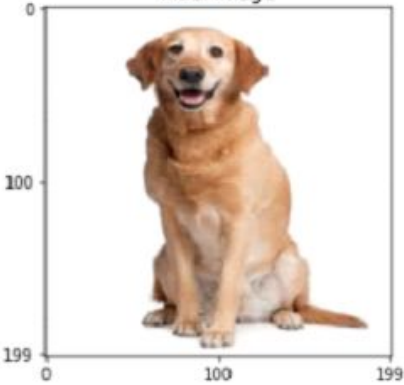
Select all images with **cars**  
Click verify once there are none left



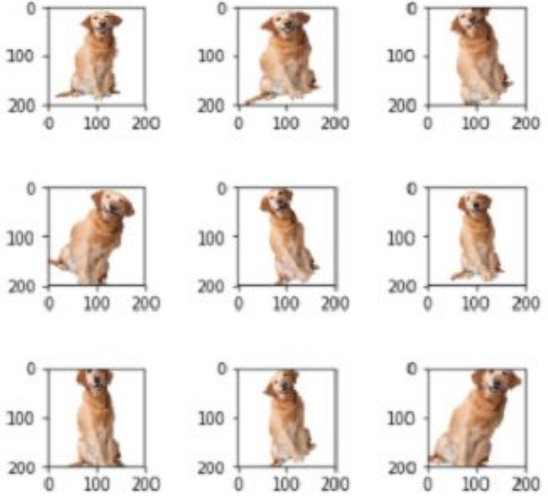
  

VERIFY

Initial Image



Augmented Images



**BREAKING DOWN  
SOCIAL BARRIERS**



MAKING THE  
WORKPLACE  
MORE  
INCLUSIVE



Thank you!  
ANY QUESTIONS?




StorkeAI

# Recorded Demo

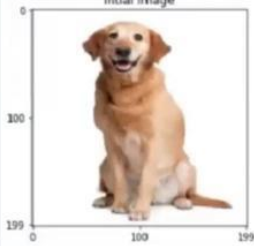
## Future Work: openFER

Select all images with **cars**  
Click verify once there are none left



🔄 🎧 ⓘ **VERIFY**

Initial Image



Augmented Images

