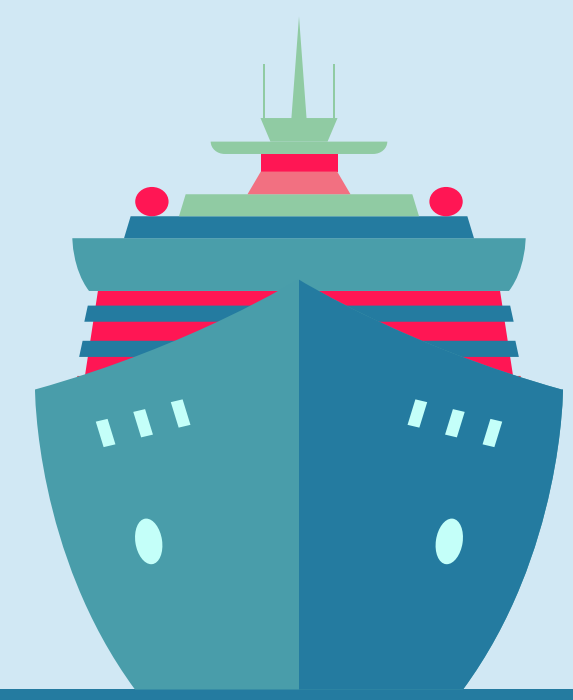
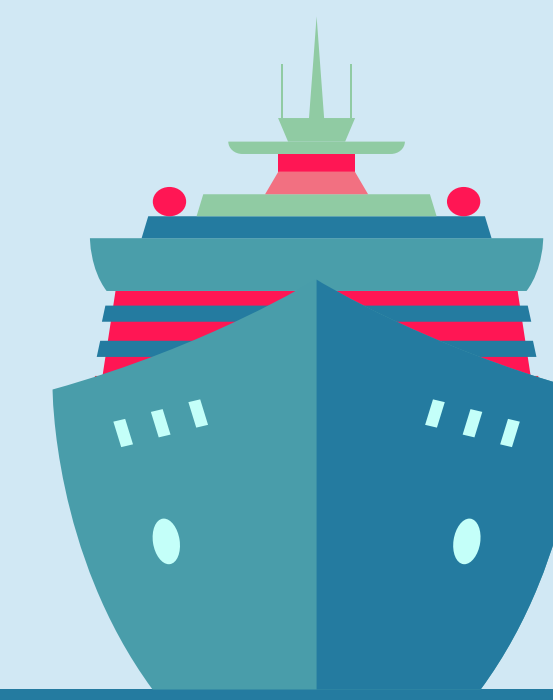




UCSB



NAVSEA



Team Sea++: Lyuda Panina, Vivian Ross, Kyle Kam, Emily O'Mahony, Thao Phan

### Acknowledgements

UCSB: Jianwen Su, Chandra Krintz, Mason Corey

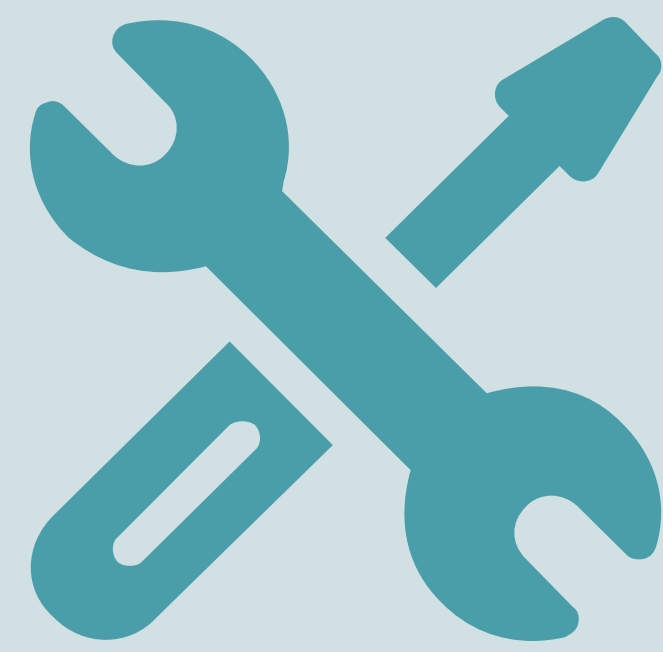
NAVSEA: Alan Jaeger, Chris Leslie

NPS: Clay Greunke



### Problem

- Navy ships systems contain old systems
- Some maintenance requires expert guidance
- Can be costly and time consuming



### Solution

- Untrained user performs maintenance assisted by app animations and instructions
- App verifies and logs user interactions



### Eye Tracking

- Follows eye movement and highlights components being gazed at
- When user looks at correct component, app logs it for validation

### Gesture Tracking

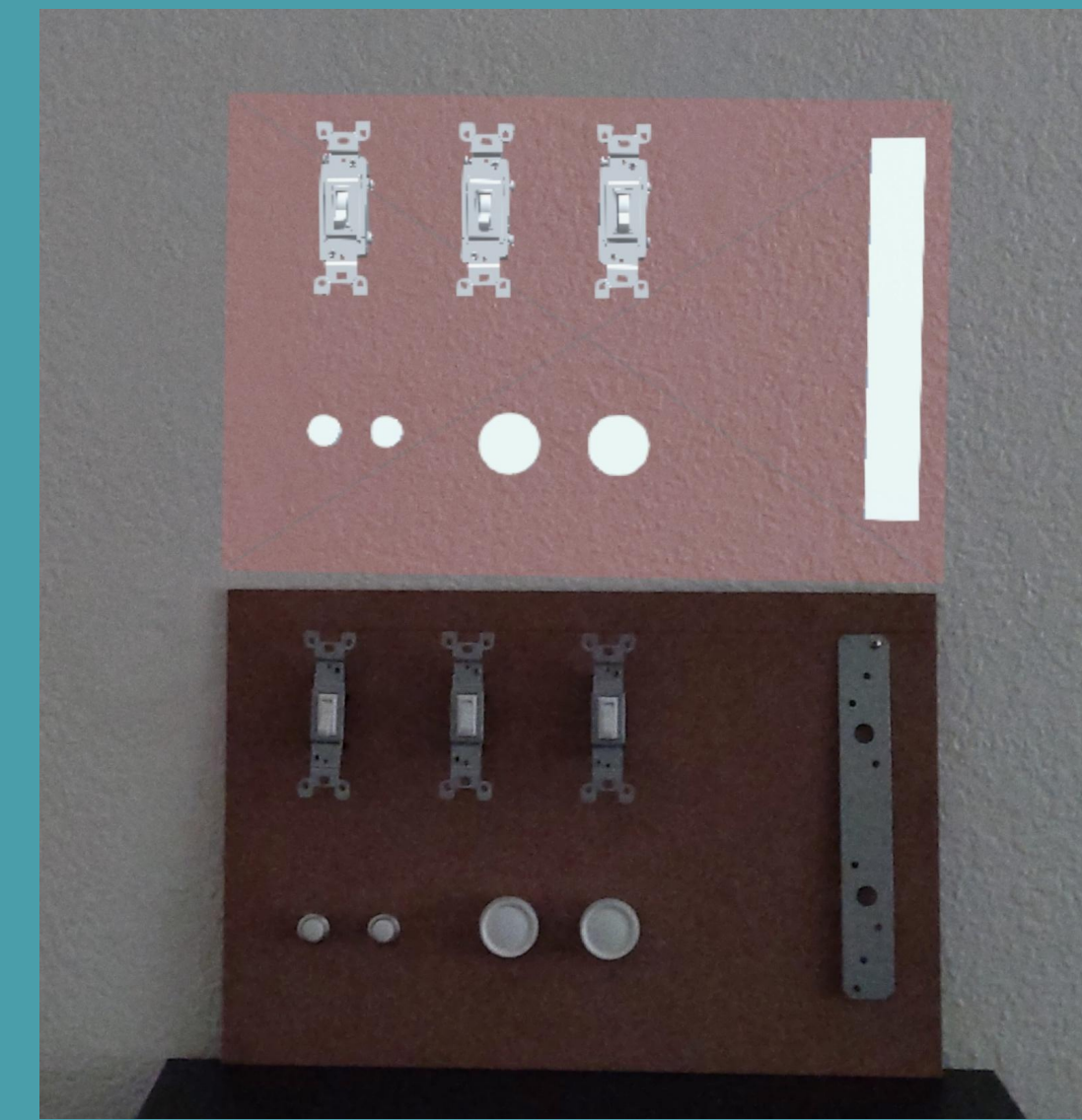
- User must perform correct gesture when interacting with certain components
- Uses in-built Mixed Reality Toolkit functionality to track knob rotation

### Hand Tracking

- User must touch correct component
- App tracks relative hand position to component and absolute hand position

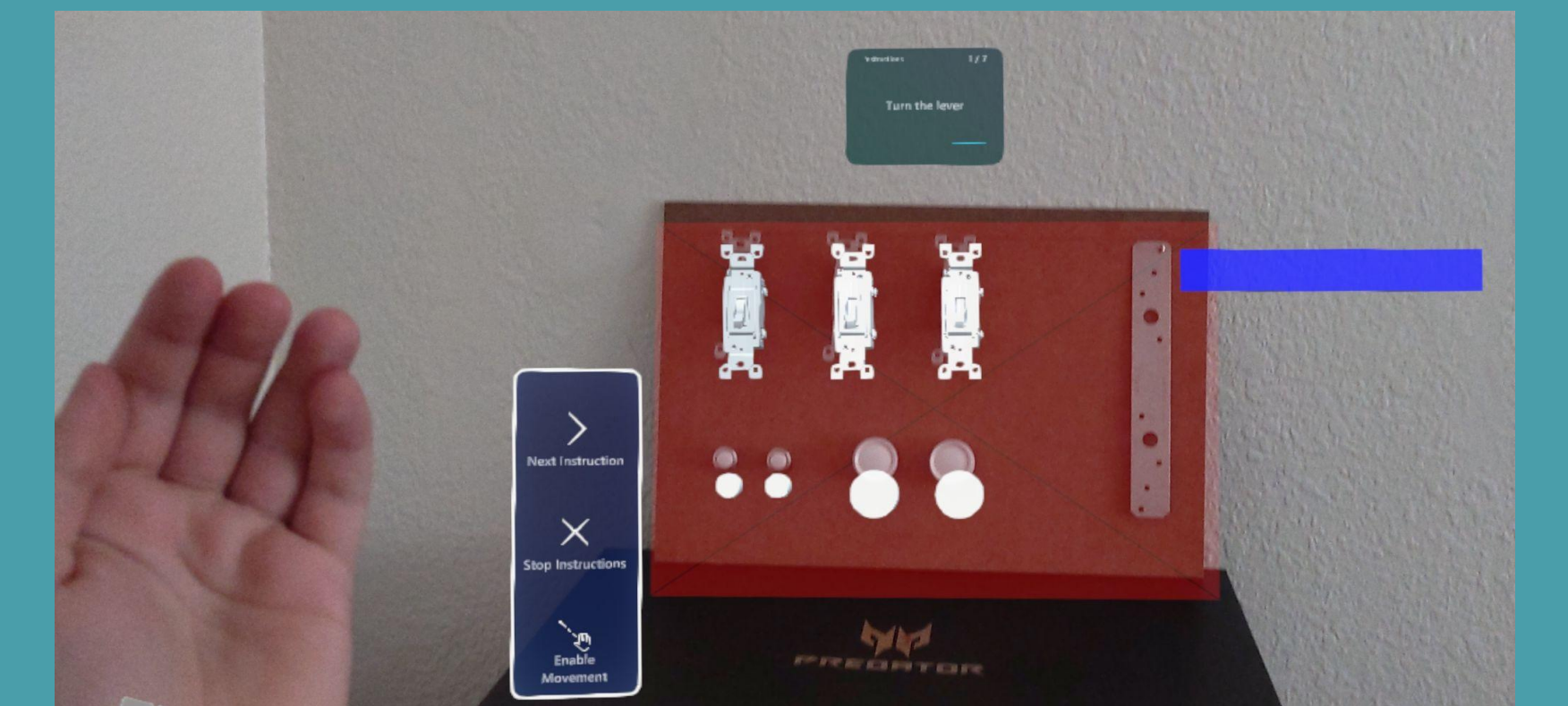
## Our App

### Alignment



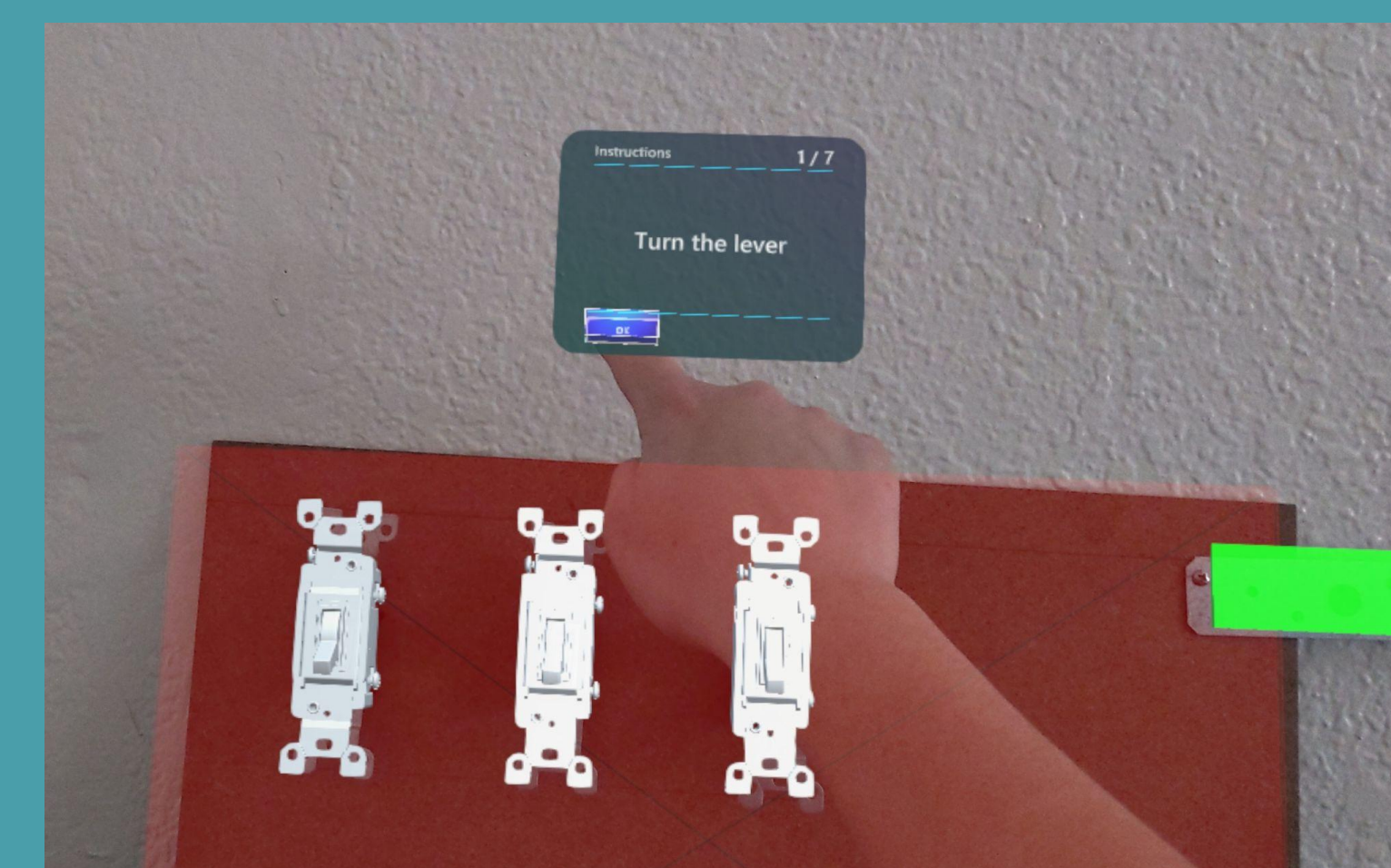
User aligns a virtual model with the physical board

### Instructions



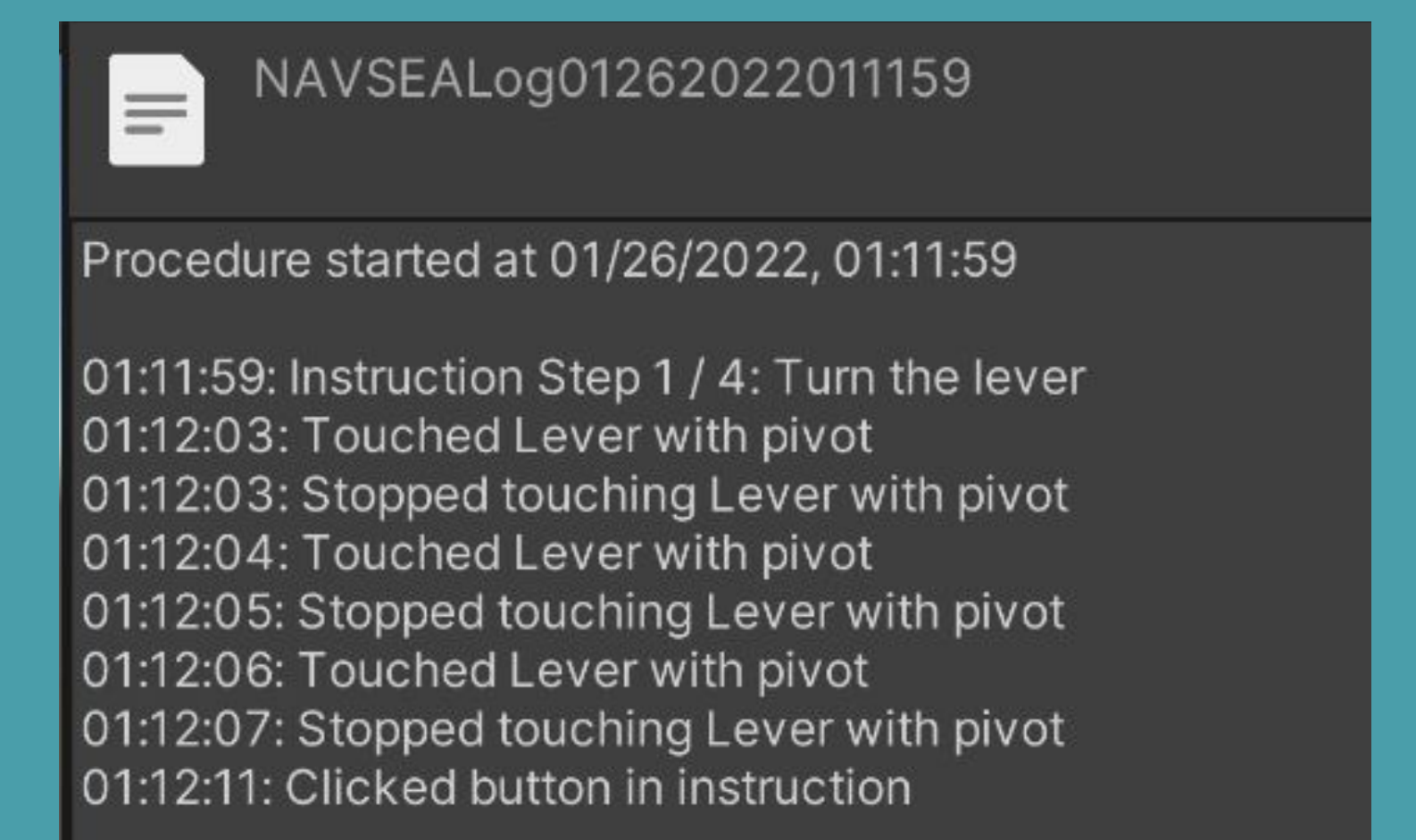
User starts instructions that walk the user through a theoretical maintenance procedure

### Verification



User can only proceed to the next instruction if they look at and touch the correct component

### Logging



Text file log allows for verification that the user executed the instructions correctly