

Recommendation Monkey

Bill.com

Quarter: Fall 2021

Professor: Jianwen Su

TA: Mason Corey

Team Name: Inspector Royale

Mentor: Stuart Ogawa

Company: Bill.com

Team Members:

Derek Garcia (Lead) - derekgarcia@ucsb.edu

Noa Kim (Scribe) - noakim@ucsb.edu

Carson Coley - carsoncoley@ucsb.edu

Jonas Zhang - huiyuzhang@ucsb.edu

Joe Zhuang - zhouzhuang@ucsb.edu

Introduction

Background:

If a business owner wanted to conduct real, statistical analysis on their transaction data they must either hire data scientists or do it themselves, both of which are sub-optimal options due to time and cost constraints. As a result, many small and large business owners eventually acquire useful financial data so large in volume that analysis becomes an overly difficult task.

There is currently no widespread method for analyzing smaller industries of a business archetype for investing purposes, but they do exist for larger businesses. Using Bayesian statistics and research data our project can offer a quantitatively and qualitatively supported recommendation to a business user.

Present Implementation:

SaleForce:

Business owners can manually enter their transaction data into a paid, cloud-based application so they can easily view analytical details and generate reports. However, this is largely impractical for any business user that must manually enter enormous amounts of financial data, and SaleForce often displays graphs but without any explainability.

HubSpot:

A free, dashboard style hub for tracking and managing customer data. While user-friendly and simple to use, HubSpot only serves as a way to manage customer data rather than analyzing and displaying it as comprehensible graphs.

Objectives, Implementation, Assumptions:

What is our objective? Who does it help and how?

We aim to create a program that provides summarized reports on whatever industries that a business owner is interested in. The summarized report will display multiple, statistical graphs for each method used while effectively explaining what the user is seeing in business terms as opposed to confusing mathematics. The variety of statistical methods work together to provide a bigger picture of the industries' behavior, while also giving a definitive, actionable conclusion to the user so they can make informed business decisions. Business owners who have large amounts of financial data that they do not know exactly what to do to benefit most from this program.

How will the solution be implemented?

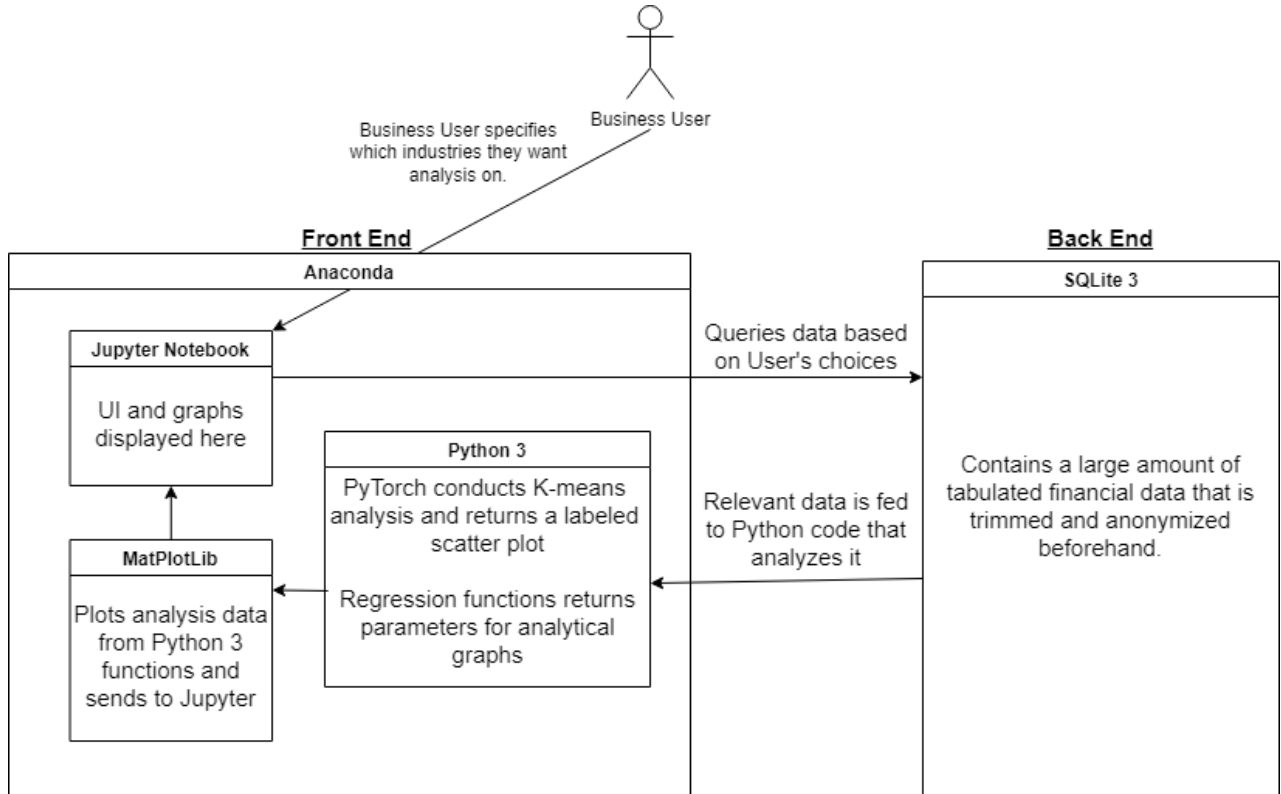
Jupyter Notebook will encompass our front-end and display a summarized report for the business user regarding the selection of industries they made, with graphs calculated by Python functions and plotted by Matplotlib, along with text explanations of the observations and conclusions. Jupyter will first query the relevant data from the SQLite 3 database, which is fed to Python functions that will calculate the parameters for statistical graphs that Matplotlib displays. Texts explaining the graphs and math conducted to the business user are added afterwards, based on what the dev team observed themselves about those industries.

What assumptions had to be made?

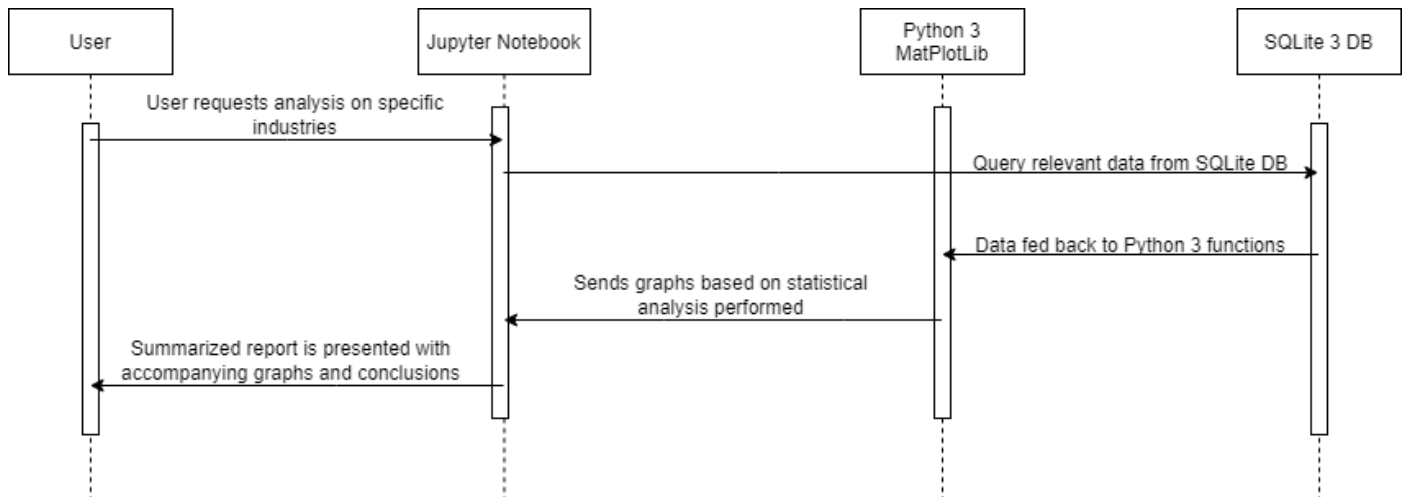
This program is strictly for business users that have access to large amounts of financial data in some database such that the Jupyter Notebook can successfully query the relevant data. The assumed format of this data is that the transaction date, sender id, receiver id, industry NAICS2 code, transaction amount, and company_size are given for each entity.

Diagrams

System Architecture Overview:



User Sequence Diagram:

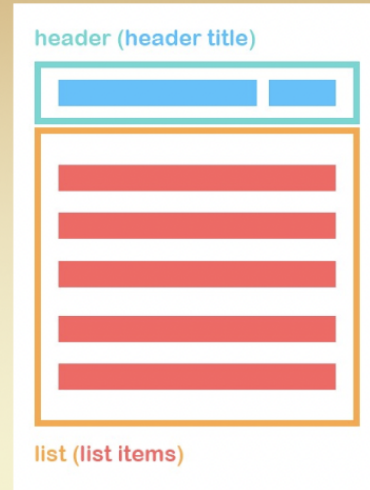


UI Design:

To get started,

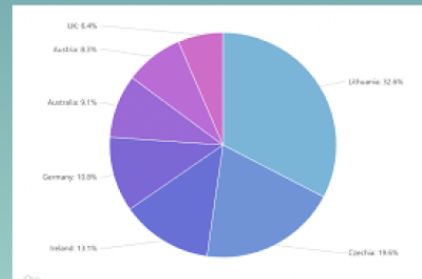
please select an **archetype**

Lorem ipsum dolor sit amet, consectetur adipiscing elit, sed do eiusmod tempor incididunt ut labore et dolore magna aliqua. Ut enim ad minim veniam, quis nostrud exercitation ullamco laboris nisi ut aliquip ex ea commodo consequat. Duis aute irure dolor in reprehenderit in voluptate velit esse cillum dolore eu fugiat nulla pariatur.



Lorem ipsum dolor sit amet, consectetur adipiscing elit, sed do eiusmod tempor incididunt ut labore et dolore magna aliqua. Ut enim ad minim veniam, quis nostrud exercitation ullamco laboris nisi ut aliquip ex ea commodo consequat. Duis aute irure dolor in reprehenderit in voluptate velit esse cillum dolore eu fugiat nulla pariatur.

TAM by Archetype



[GET A REPORT](#)

Please select the

number of industries within
the archetype `archetype_name`

Feature	Explanation
Yield	Amount of grain per unit of land
check yield	Commercial variety's yield used as performance
yield difference	Difference between yield and check yield
Year	Year in which the variety was planted
Planting date	Planting date
Geographic coordinates	GPS latitude and longitude of the farm or field
Temperature	Sum of daily temperatures in C° in growing season
Precipitation	Sum of daily precipitations in mm in growing season
Solar radiation	Sum of daily solar radiation in W/m^2 in growing season
CEC	Cation exchange capacity
pH	log of H+ concentration in soil
Organic matter	Percentage of soil made up of organic matter
Soil class	Soil class category
Clay	Percentage of clay in soil
Silt	Percentage of silt in soil
Sand	Percentage of sand in soil
Area	Probability of growing soybeans in the study area
PI	Soil productivity index

Features available in the Experiment dataset are listed in the left column, while their explanations are on the right.

[10.1371/journal.pone.0184198.t001](https://doi.org/10.1371/journal.pone.0184198.t001)

Simple TAM Customer Report

Thesis and recommendation:

Lorem ipsum dolor sit amet, consectetur adipiscing elit, sed do eiusmod tempor incididunt ut labore et dolore magna aliqua. Ut enim ad minim veniam, quis nostrud exercitation ullamco laboris nisi ut aliquip ex ea commodo consequat.

Top Businesses to Pursue

1. Amazon
2. Google
3. Netflix

Date	Entry	Size	Close	Difference	% Return	P&L	Stdev
21-May-10	27.57	500					
24-May-10			27.8	0.23	0.83%	\$115.00	
1-Jun-10			27.34	-0.23	-0.83%	-\$115.00	
7-Jun-10			28.87	1.30	4.72%	\$850.00	
14-Jun-10			30.1	2.53	9.18%	\$1,260.00	
21-Jun-10			29.74	-1.17	-3.87%	-\$495.00	
28-Jun-10			27.8	-0.23	-0.83%	-\$115.00	
5-Jul-10			28.49	1.32	4.90%	\$960.00	
12-Jul-10			29.33	1.75	6.38%	\$880.00	
19-Jul-10			29.66	2.09	7.58%	\$1,045.00	
26-Jul-10			30.69	3.12	11.32%	\$1,500.00	
2-Aug-10			30.58	3.01	10.92%	\$1,505.00	
9-Aug-10			29.83	1.45	5.30%	\$730.00	
16-Aug-10			28.38	-0.81	-2.71%	-\$305.00	
23-Aug-10			27.88	-0.81	-2.89%	-\$320.00	0.94

Investopedia

 Flag this report

More Info >>

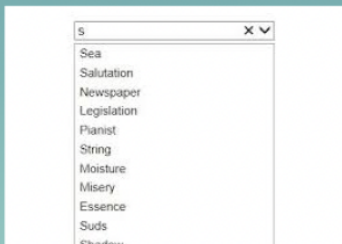
Please select a simple or advanced customer:

simple

advanced

Simple Customer Report: Detailed Analysis

Top 20 Businesses



TAM:
Revenue Growth:
Activity:

[Back to summary <<](#)

Qualitative Research:

Lorem ipsum dolor sit amet, consectetur adipiscing elit, sed do eiusmod tempor incididunt ut labore et dolore magna aliqua.

Scores of Sectors:

Lorem ipsum dolor sit amet, consectetur adipiscing elit, sed do eiusmod tempor incididunt ut labore et dolore magna aliqua.

10 Key Attributes:

Lorem ipsum dolor sit amet, consectetur adipiscing elit, sed do eiusmod tempor incididunt ut labore et dolore magna aliqua.

User Stories / Use Cases

1. **As a business user, I want to view a cluster graph of transaction amount vs. time in a given industry so I can easily visualize similar transaction groups.**

Acceptance Criteria: Graph appears plotting all transactions from the given industry with transaction amount as y-axis and transaction date as x-axis, with cluster centers plotted and corresponding color labels applied. Data is classified into three distinctly colored clusters using a K-means algorithm displaying layers of transactions.

Scenario: User selects transaction vs time and industry and is shown a visual cluster graph of the transaction groups

Github Issue: <https://github.com/DepDerek/InspectorRoyale/issues/12>

2. **As a business user, I want to view a scatter plot of the transactions of the middle cluster from the aforementioned graph so I can better visualize transactions that are between non-significant and significant.**

Acceptance Criteria: Graph appears plotting all transactions given by the middle cluster of the previous graph, with each transaction being colored according to the unique sender ID involved in that transaction. Linear regressions of each unique sender ID's transaction can be viewed as well as the rates of change.

Scenario: User selects scatter plot and is shown which transactions that are non-significant or significant.

Github Issue: <https://github.com/DepDerek/InspectorRoyale/issues/13>

3. **As a business user, I want to view a bar graph of the net transaction acceleration of each sender ID from the aforementioned middle cluster so I can visualize which senders enjoyed the highest increase to the rate of change of their transaction amounts.**

Acceptance Criteria: A bar graph appears where each bar is colored and labeled along with a legend of the previous linear regression graph, and the height of each bar shows the net acceleration of the transaction amount.

Scenario: User selects bar graph option and net transaction acceleration to see rates of change for transaction amounts

Github Issue: <https://github.com/DerpDerek/InspectorRoyale/issues/14>

4. **As a business user, I would like to view the increment trend of total transaction amount or transaction count per day/month to know how positive each industry/company develops throughout the time**

Acceptance Criteria: Graph of the approximation polynomial function should appear together with coefficients for each variable, and the function should expand to the corresponding date and the value on that date to be displayed.

Scenario 1: User selects the order of derivatives of any natural number for the fit function

Scenario 2: User selects a date in the future for the value prediction

Github Issue: <https://github.com/DerpDerek/InspectorRoyale/issues/15>

5. **As a business user, I would like to view the periodic trend of total transaction amount/transaction count per day/month to know how the transactions of each industry/company fluctuate through the time.**

Acceptance Criteria: The graph of the approximation sine function should appear together with the approximated coefficients for each variable, and the function will expand to the corresponding date and the value on that date will be displayed.

Scenario 1: user inputs guessed parameters for the trigonometry function

Scenario 2: user selects the a date in the future for the value prediction

Github Issue: <https://github.com/DepDerek/InspectorRoyale/issues/16>

6. **As a business user, I would like to generate an advanced summary TAM report so I can easily see details of transaction amounts about selected industries.**

Acceptance Criteria: A summary report should show transaction amounts for specific industries. Unique sender and receivers should be shown and a graph with total transaction amount per month and average transaction amount for a selected industry.

Scenario 1: User selects “Transaction Amount” option and filters for industries. A graph should appear showing total transaction amount per month and average transaction amount per month about selected industries

Scenario 2: User searches for transaction amount with a specific industry. A graph should appear showing the number of unique senders and receivers in a given time period and their average transaction amount.

Github Issue: <https://github.com/DerpDerek/InspectorRoyale/issues/17>

7. As a business user, I would like to view transaction details per day/month/quarter

Acceptance Criteria: Different filters can be chosen for a time period: day, month and quarter to get a line chart. A table of transactions can be filtered within a range, industry, date, and transaction amount.

Scenario 1: User selects “Transaction Amount” option and filters for time period. A line chart should appear plotting max and min transaction amount per day/month/quarter

Scenario 2: User selects “Transaction Amount” option and filters for certain average transaction dollar amount. A table should appear showing all senders and receivers that make transactions within the filtered range along with their industries, transaction dates, and average transaction amount.

Github Issue: <https://github.com/DerpDerek/InspectorRoyale/issues/18>

8. As a business user, I should see a sequential flow of numerous data visualizations

Acceptance Criteria: Data visualizations should include, ‘All transaction history’, ‘Sum by day’, ‘Sum by Month’, ‘Regression Analysis’, ‘Number of transactions by day’, etc, illustrating the future market for a given industry.

Scenario 1: Users can select ‘Regression Analysis’ and see recommendations based on that method.

Scenario 2: Users can select 'All transaction history' to see and visualize the data given.

Github Issue: <https://github.com/DepDerek/InspectorRoyale/issues/19>

- 9. As a business user, I should be able to view each statistical approach used to calculate basic stats and realize, via static content, why the results are significant.**

Acceptance Criteria: Options to choose different statistical approaches like, basic calculations on the dataset, K-means clustering, and sine curve experiments/models

Scenario 1: Users can choose calculations on the dataset, to see and visualize the method on the data.

Scenario 2: Users can choose K-means clustering to see this specific method on the dataset.

Github Issue: <https://github.com/DepDerek/InspectorRoyale/issues/20>

- 10. As a business user, I should see different data and data analysis**

Acceptance Criteria: The different data analysis options that can be chosen include: Objective, Data Engineering Approach, Data Science Approach, K-means clustering, regression analysis and recommendation

Github Issue: <https://github.com/DepDerek/InspectorRoyale/issues/21>

- 11. As a business user, I want to view the top 20 businesses to pursue within an archetype**

Acceptance Criteria: Based on statistical methods, a list of businesses to pursue are seen based on an archetype and is sorted by the total preserved volume.

Scenario 1: User can select an archetype and is given a list of businesses

Github Issue: <https://github.com/DepDerek/InspectorRoyale/issues/22>

aa

Technologies

- Anaconda:
 - Jupyter Notebook:
 - Front-end flow for customer presentation, in-line graphing and visualization
 - Python 3:
 - Numpy: support multi-dimensional arrays for data processing and analysis
 - Scipy: support methods like function-fit and other Math & Stat algorithms
 - Matplotlib: visualize data sets and processes of analysis
 - Pytorch: provide libraries for k-means and other machine learning algorithms
- SQLite
 - DB Browser:
 - Provide environment for efficient DB transactions and table manipulations