



LEGS / LOCAL EQUIPMENT GUIDANCE SYSTEM

RAHUL DHARMAJI • JASON EM • DANIEL ESKANDER • YVONNE LIU • FLUELLEN ARMAN UMALI

IN COLLABORATION WITH —



ALAN JAEGER — NAVSEA
TOBIAS HÖLLERER — UCSB
GIOVANNI VIGNA — UCSB

THEIR PROBLEM

- Maintenance of specialized equipment requires trained personnel who are not always in close proximity to the repair site.
- Those who are already nearby are often untrained and need external assistance in repairing the equipment.
- Sending trained experts to on-site locations is costly, time consuming, and logistically challenging.

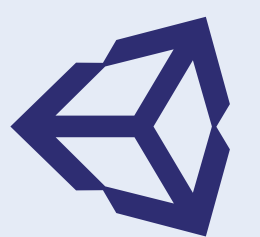
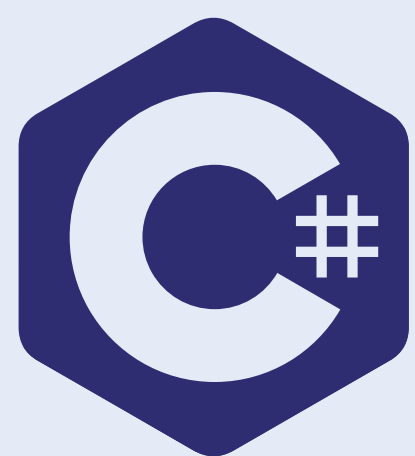
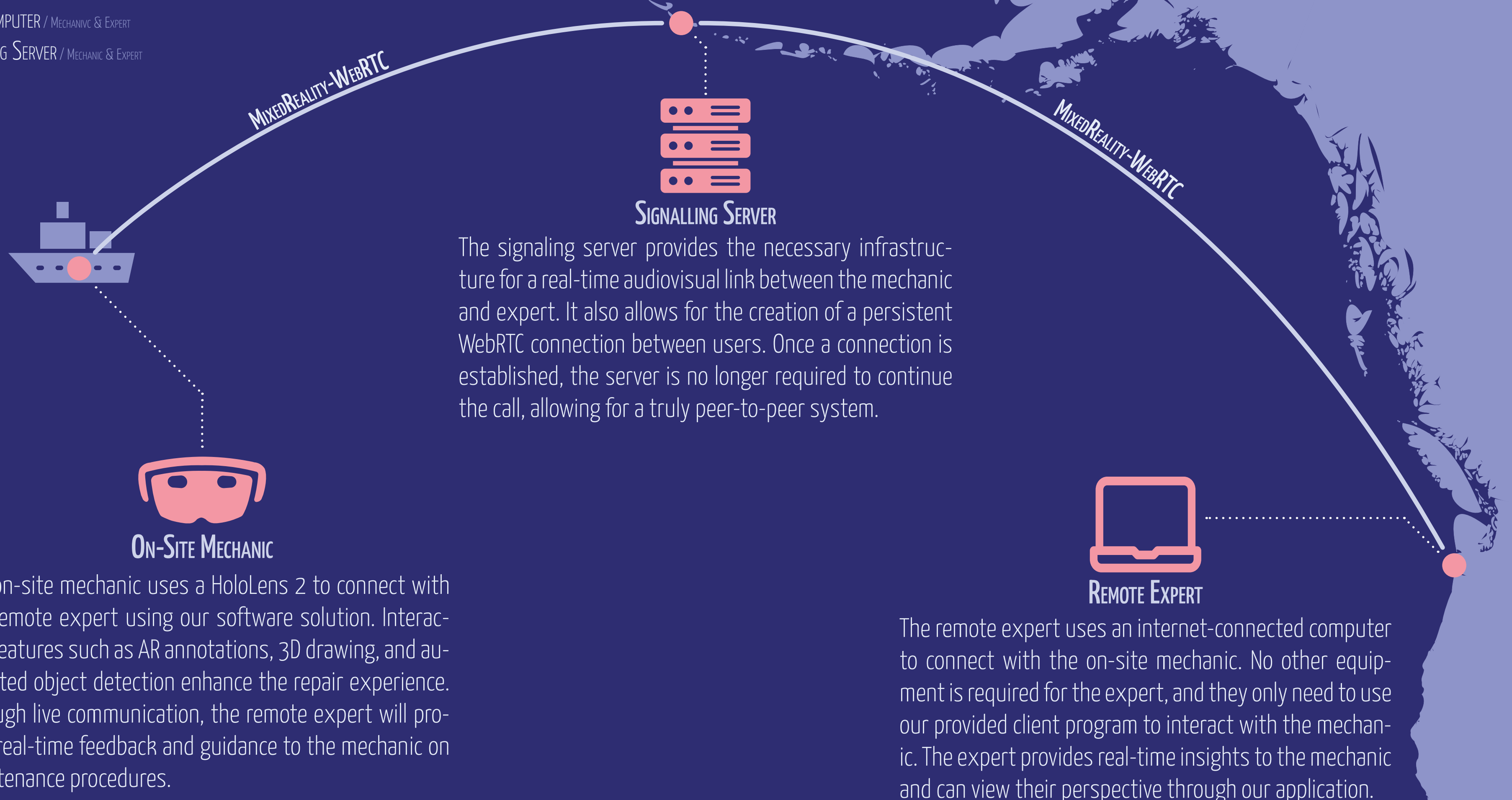
OUR SOLUTION

- On-site mechanics with minimal training will be able to repair complex systems through remote expert assistance.
- Communication via the Microsoft HoloLens 2 provides the expert a live feed of the mechanic's actions.
- AR annotations and gestures improve worker efficiency and enables real-time feedback on maintenance tasks.

◆ LEGS / LOCAL EQUIPMENT GUIDANCE SYSTEM

SYSTEM REQUIREMENTS —

- MICROSOFT HOLOLENS 2 / MECHANIC
- INTERNET-ENABLED COMPUTER / MECHANIC & EXPERT
- ACCESS TO A SIGNALLING SERVER / MECHANIC & EXPERT



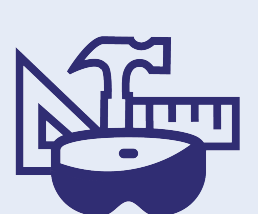
unity



vuforia



Microsoft HoloLens



MRTK
MIXED REALITY TOOLKIT

TECHNOLOGIES

(MixedReality-WebRTC)

WebRTC



PEER-TO-PEER FRAMEWORK
NOT REQUIRED AFTER CALL BEGINS
CONNECTS HOLOLENS & COMPUTER
TRANSPARENT TO USERS



AUDIO/VIDEO STREAMING
AR MARKER GENERATION
HOLOLENS PERSPECTIVE VIEWER
USER SYNCHRONIZATION

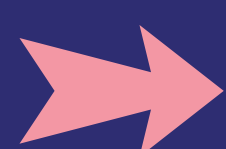


3D DRAWING IN AR SPACE
CUSTOM AR MARKER PLACEMENT
AUDIO/VIDEO STREAMING
REAL-TIME OBJECT DETECTION

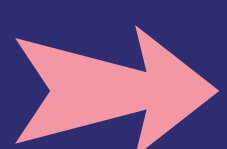
FEATURES



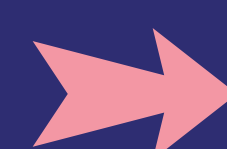
SIGNALLING SERVER READY



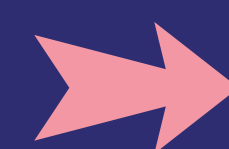
COMPUTER INITIATES CALL



HOLOLENS ACCEPTS CALL



USERS CONNECTED



MAINTENANCE WORK BEGINS