

KDD 2023 RESEARCH TRACK OVERVIEW

Research Track Program Chairs



Xifeng Yan
UC Santa Barbara



Leman Akoglu
Carnegie Mellon University



Dimitrios Gunopulos
National and Kapodistrian
University of Athens

Research Track Workflow Chairs



Yu Su
Ohio State University



Ziniu Hu
Caltech



Yue Zhao
University of Southern
California

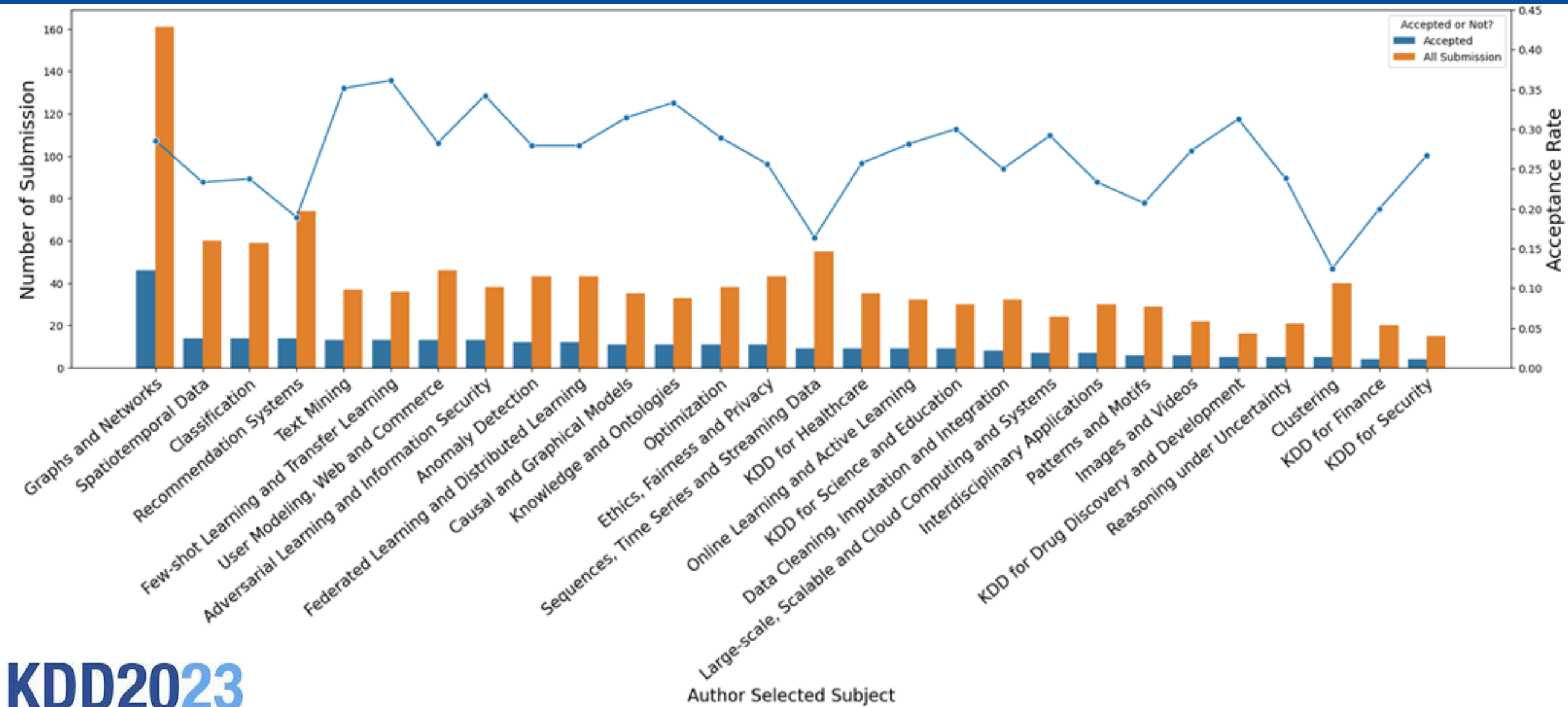
Research Track Statistics

- Total number of PCs: 1,469 (KDD 2022: 1,088)
- Total number of SPC: 154
- PC review period: 5 weeks
- Each paper received at least 3 reviews from the PC
- The review process is double-blind

Research Track Statistics

	# Submissions	# Accepted	Acceptance Rate
2019	1179	174	14.76%
2020	1279	217	16.96%
2021	1541	239	15.50%
2022	1665	254	15.25%
2023 (this year)	1416	313	22.10%

Submission & Acceptance By Topics



Topic Distribution



What Is New This Year

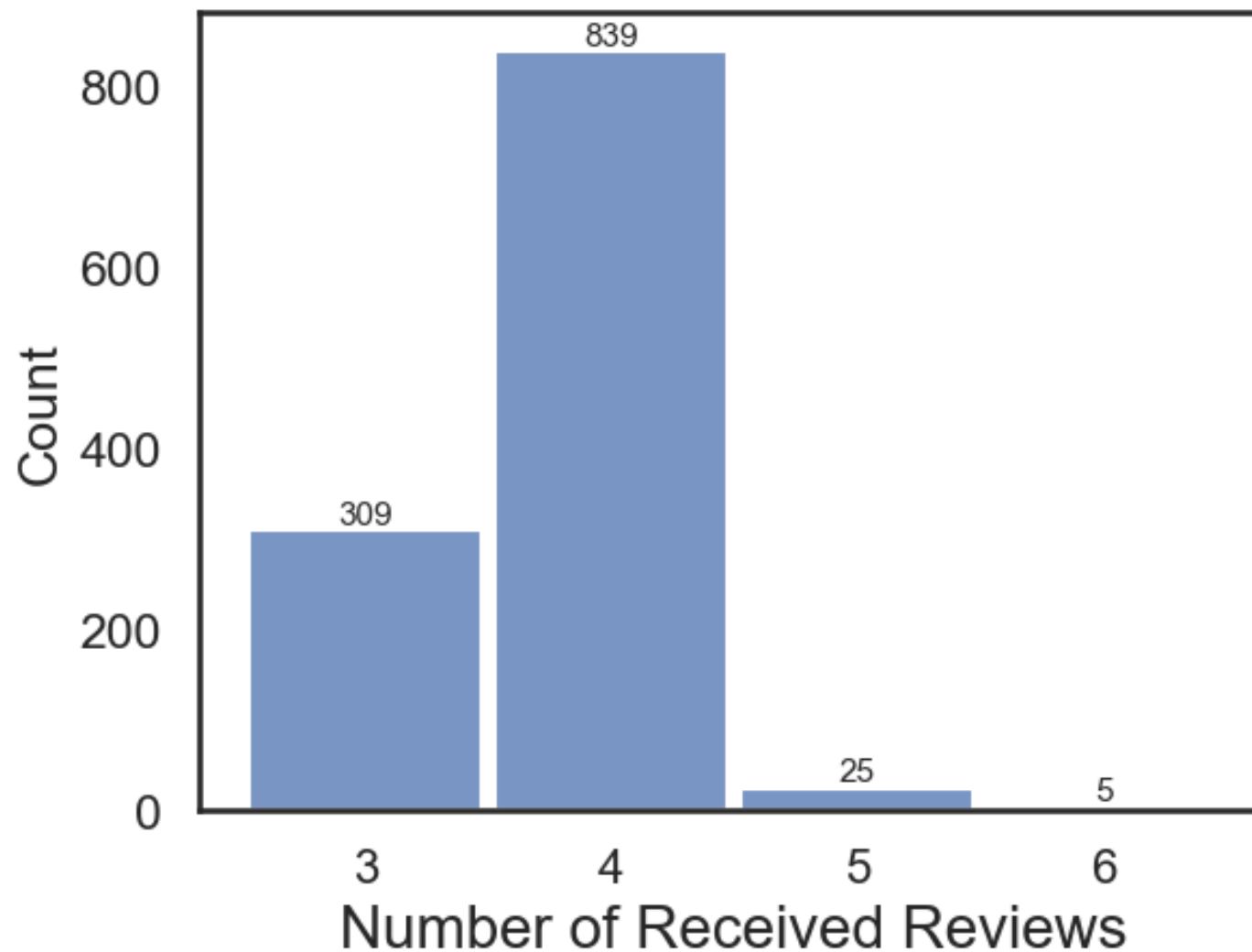
It is all about OpenReview!

(reviews/responses are not released publicly this year)

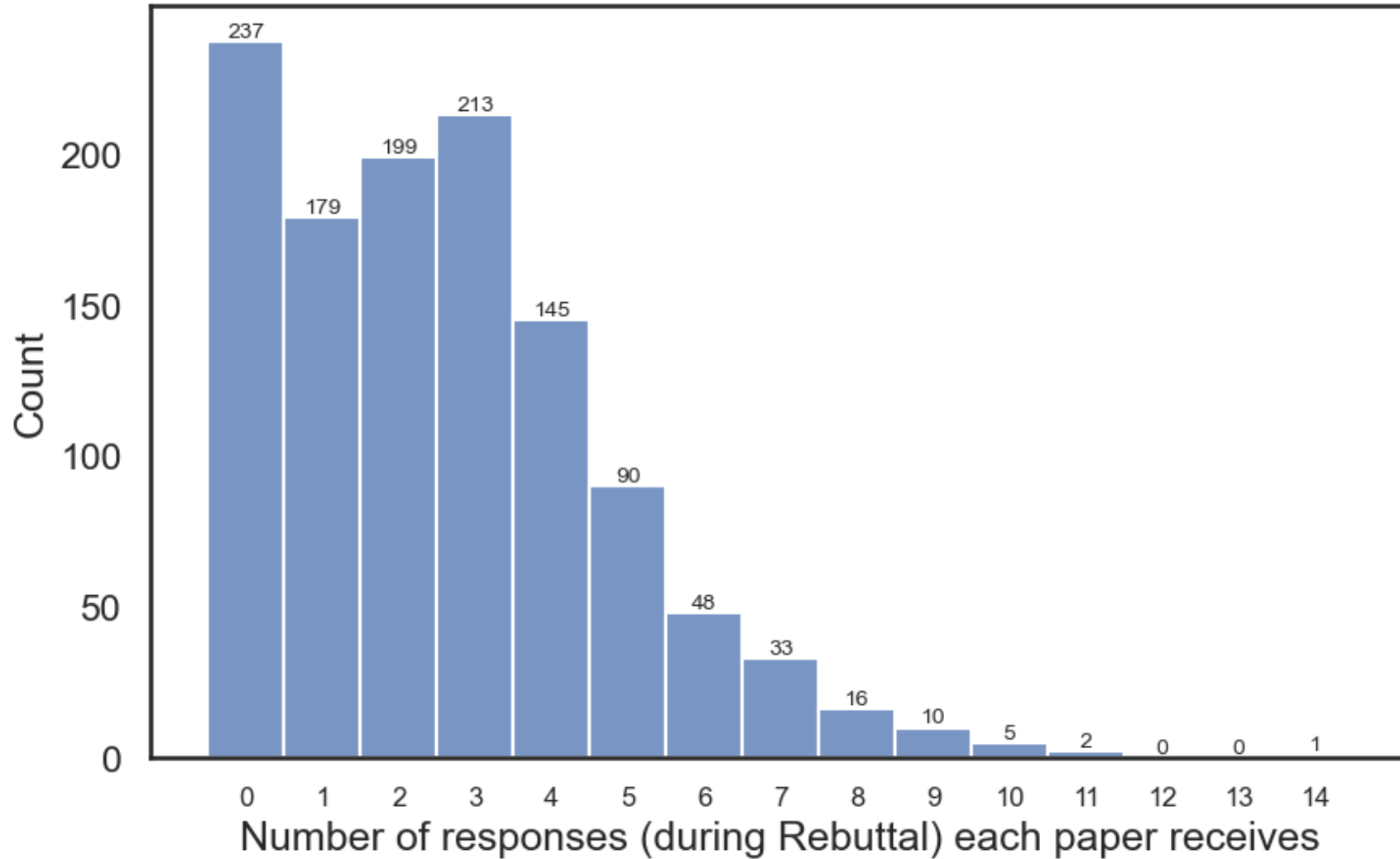
OpenReview

1. Workflow chairs were critical in using OpenReview. Thank you for your exceptional work – Yu, Yue, Ziniu!
2. We did not leverage OpenReview fully since the reviews are not public this year.
3. Nevertheless, used OpenReview essentially as a proof of concept this year:
 - Managing a huge workload using OpenReview is feasible.
 - OpenReview does facilitate more interaction between authors and reviewers.

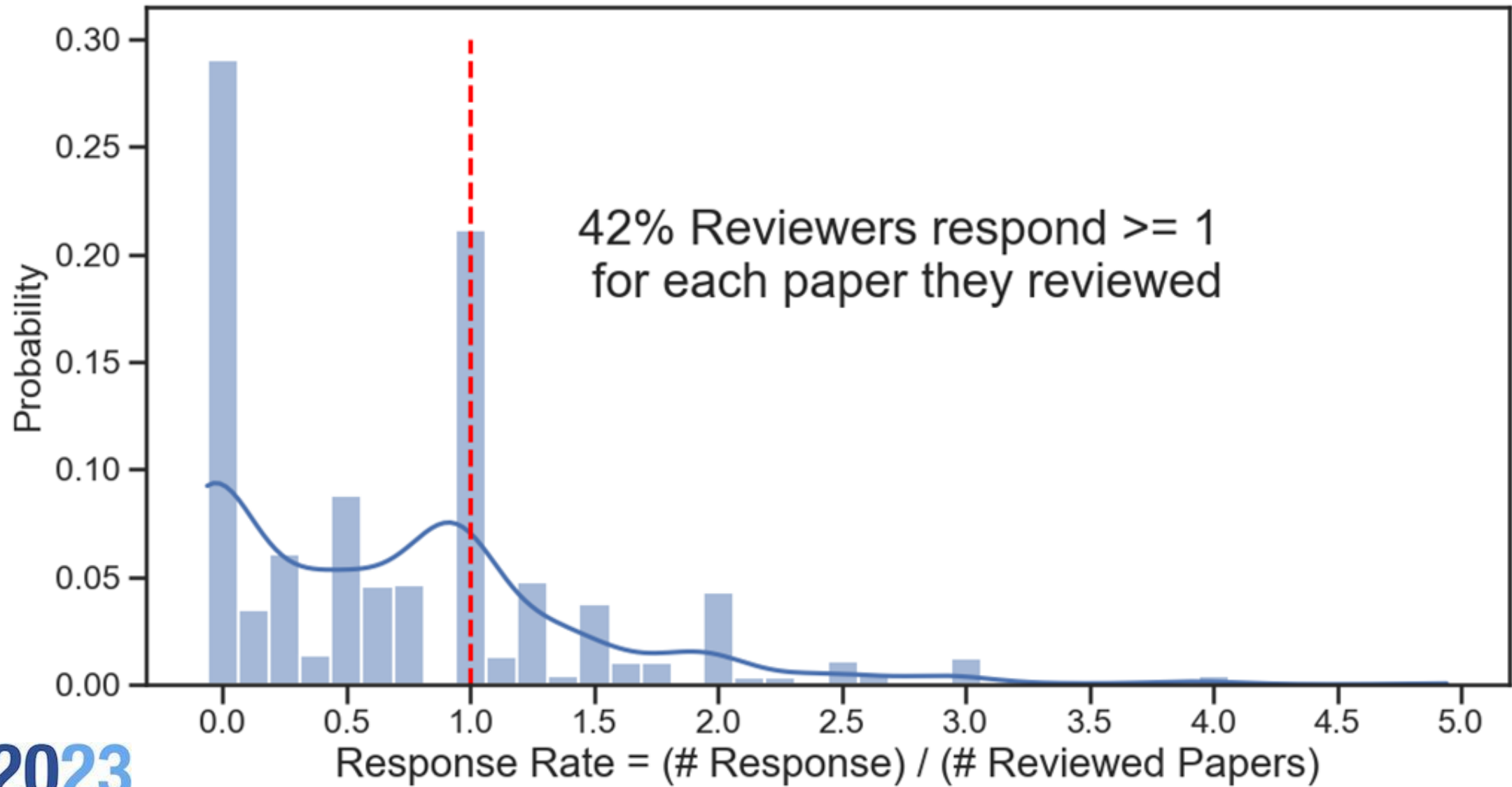
Number of Received Reviews



Number of Responses During Rebuttal

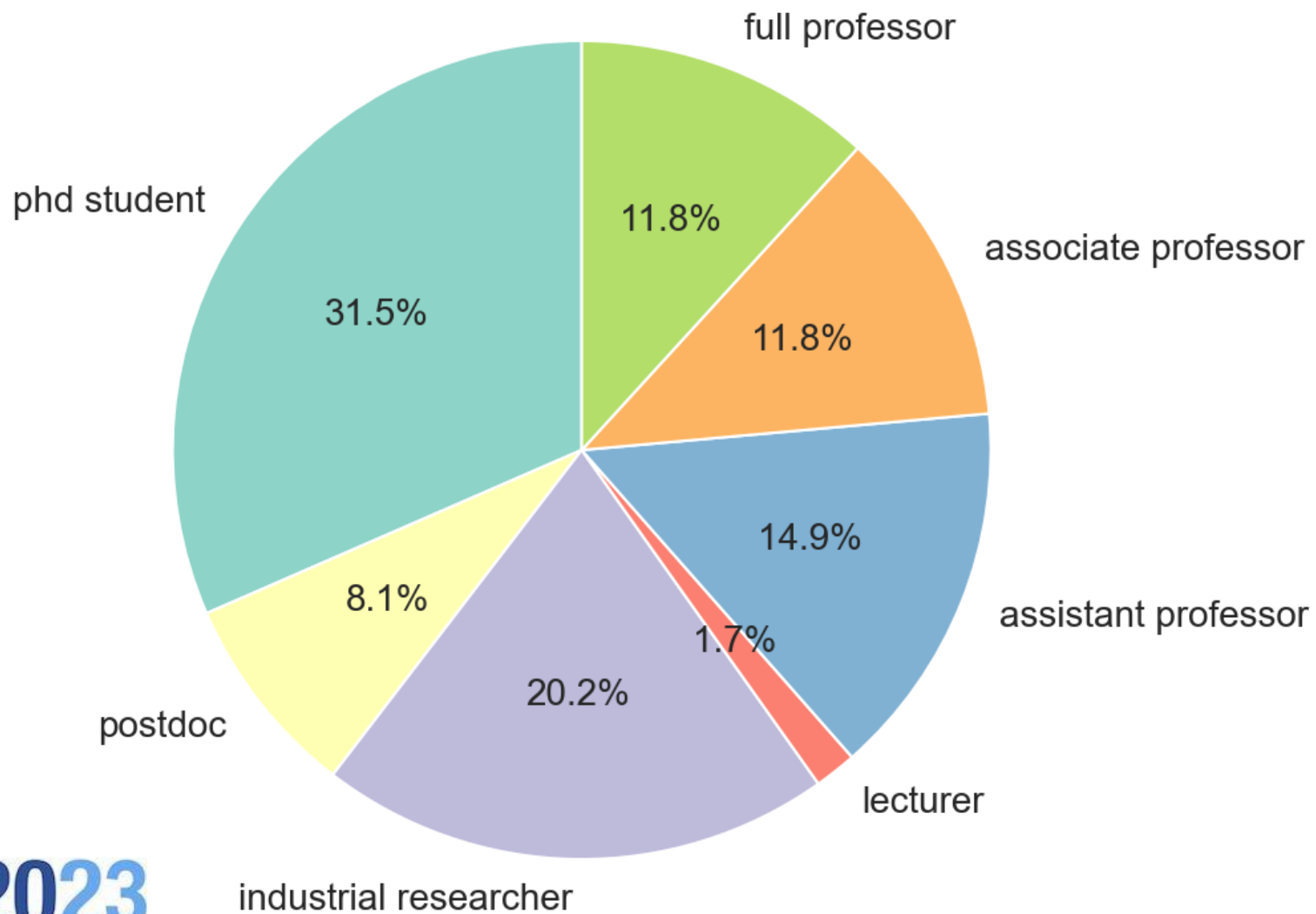


Response Rate per Reviewers



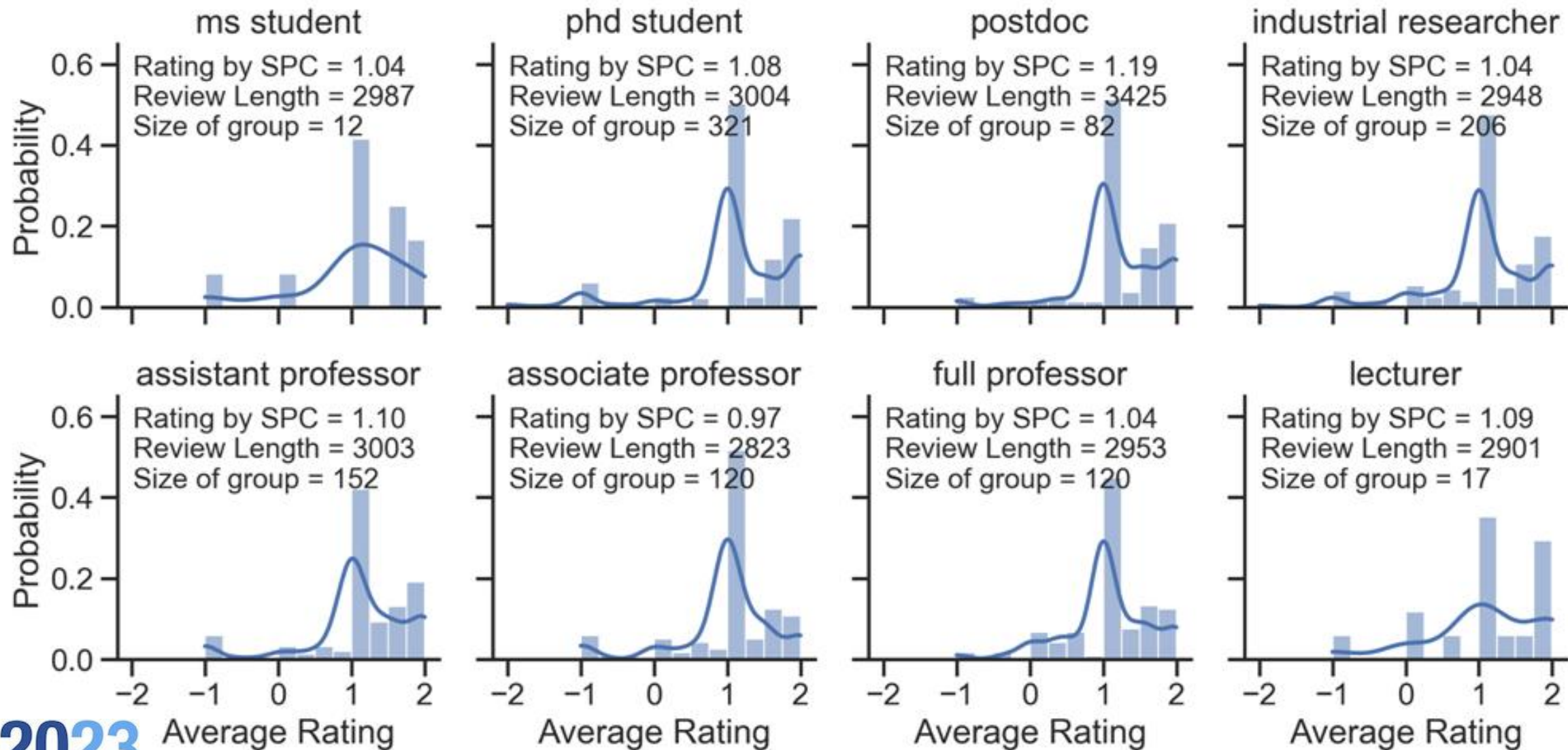
PC Distribution by Group

1469 PC members in total



SPC were asked to rate each review in their batch; -2:1:2

Review Quality per Group



Best Reviewers (Criteria: Rating & Interaction)

Anes Bendimerad

Aniek F. Markus

Antoine Ledent

Atsushi Miyauchi

Buse G. A. Tekgul

Chengkai Li

Christopher John Quinn

David Guijo

Dayne Freitag

Esther Galbrun

Francesco Gullo

Germain Forestier

Hanzhi Wang

Hongwei Jin

Jie Wang

John Paparrizos

Institut National des Sciences Appliquées de Lyon

Erasmus MC

Singapore Management University

CENTAI Institute

Nokia Bell Labs

University of Texas at Arlington

Iowa State University

Rubio University of East Anglia

SRI International

University of Eastern Finland

UniCredit

Université de Haute-Alsace

Renmin University of China

Argonne National Laboratory

University of Science and Technology of China

Ohio State University, Columbus

Best Reviewers (Criteria: Rating & Interaction)

Jun Wu	University of Illinois, Urbana Champaign
Lu Qin	University of Technology Sydney
Marco Bressan	University of Milan
Ronny Luss	IBM
Shichang Zhang	University of California, Los Angeles
Siddhartha Laghuvarapu	University of Illinois, Urbana Champaign
Sungwon Park	Korea Advanced Institute of Science and Technology
Xuemin Lin	Shanghai Jiaotong University
Yi He	Old Dominion University
Yizhu Jiao	University of Illinois, Urbana Champaign
Yu Zhang	University of Illinois, Urbana Champaign
Yuhan Wu	Peking University
Zhenya Huang	University of Science and Technology of China
Zhong Chen	Xavier University of Louisiana